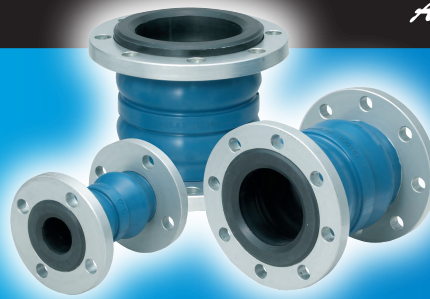


Rubber flexible joint High durability type

TOUGHLEX

Low reaction force rubber flexible joint with reduced axial elongation caused by internal pressure.



Compliance with the specification of Ministry of Land, Infrastructure, Transport and Tourism

Feature

Excellent durability

Passed 200,000 cycles in reciprocating pressure fluctuation test .

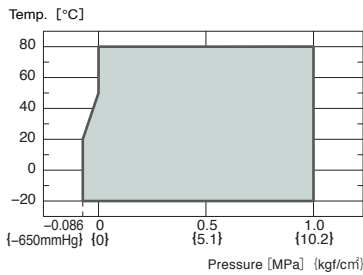
Excellent resistance to deterioration

Excellent resistance to deterioration caused by chlorine, ozone, and sun light.

Robust body pressure resistance

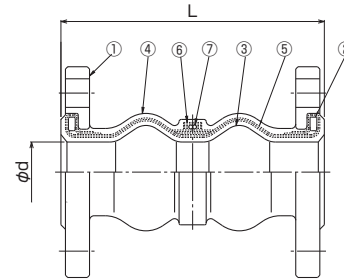
Brusting pressure at 4MPa or above.

Operating Conditions and Performance



● Use after confirmation that the maximum operation pressure and maximum service temperature are within the operation range.

Structure



No.	Parts	Material	No.	Parts	Material
①	Flange	SS400	⑤	Reinforcing cord	Aramid fiber
②	Reinforcing Ring	SS400	⑥	Reinforcing cord	Synthesized fiber
③	Inner Rubber	EPDM (SK10)	⑦	Reinforcing Ring	SWRH (100mm~300mm)
④	Outer Rubber	EPDM (SK10)			

	Standard	JIS10K
	Flange compatible dimension	Flange standard can be changed to
Material	Standard	SS400
	Flange material can be changed to	x FCD450 x SUS304 x SUS316 x PVC

Dimensions and Allowable Movements

Nominal Dia.		Dimension [mm]		Mass [Kg]	Allowable Movement [mm]				Installation Tolerances [mm]			
mm	inch	L	φd		Eccentricity	Elongation	Compression	Deflection angle	Eccentricity	Elongation	Compression	Deflection angle
20	3/4	120	20	1.3	15	10	15	20°	6	3	6	10°
25	1	120	25	2.3	15	10	15	20°	8	3	6	10°
32	1 1/4	175	32	3.0	20	10	20	20°	8	3	6	10°
40	1 1/2	175	40	3.2	20	10	20	20°	8	3	6	10°
50	2	175	50	3.9	20	10	20	20°	8	3	6	10°
65	2 1/2	175	65	5.4	20	10	20	20°	8	3	6	10°
80	3	175	75	5.6	20	10	20	20°	8	3	6	10°
100	4	225	100	7.2	25	15	30	20°	10	3	6	10°
125	5	225	125	10	25	15	30	20°	10	3	6	10°
150	6	225	150	13.5	25	15	30	20°	10	3	6	10°
200	8	250	200	17	25	15	30	15°	10	3	6	7.5°
250	10	250	250	25	25	15	30	15°	10	3	6	7.5°
300	12	250	300	28	25	15	30	15°	10	3	6	7.5°

- Use a joint within the allowable displacement range.
- The allowable fixing dimension is included in the allowable displacement amount (allowable displacement amount = fixing time displacement + operation displacement)
- Each displacement in the chart are data of a single displacement, so for multiple displacements, correction is necessary. For correction method, refer to "Attention for handling" or "TOZEN HP"



Note: This brochure may be revised without prior notice. We apologize in advance for any inconvenience this may cause.

Agent

TOZEN Corporation
8-4, Asahi, Yoshikawa
Saitama 342-0008 Japan